



<http://www.lnersvrcoachfund.org.uk>



Caring for Gresley carriages on the Severn Valley Railway  
The Railway Station, Bewdley, Worcestershire, DY12 1BG

Coach Fund President: David Williams CF Vice Presidents: Tim Godfrey FCIM, F Inst D, FFB and Mick Haynes  
Trustees: Hugh McQuade (Ch), Stewart Clark, Mike Cranmore, Richard & Doris Gunning, Richard Hill, David Massey, Tom Root, Roger Stockman

## LNERCF & LNERCG NEWSLETTER No. 18

### GREAT BRITISH RAILWAY JOURNEYS

Michael Portillo visited the SVR on 16<sup>th</sup> September and started his day with a ride in our GNR 2701. The programme producers also selected our pigeon van project for part of the filming. The new series is planned to start in January.

### NEWS OF THE TRUST

The Rolling Stock Trust's change of identity is now official. Companies House have issued the Certificate of Incorporation for the Severn Valley Railway Charitable Trust Ltd. A new fund raising committee is making good progress in setting up some high profile fund raising events for the next few months.

A little more patience is still required, as the Trust's bank has yet to complete its 'change of name' process...

### A BIG "THANK YOU" TO DORIS & SUE

We are indebted to the work that Doris and Sue do in the Bewdley Station Shop, fundraising for our trading arm, the LNER (SVR) Coach Fund. All the proceeds of shop sales on behalf of the Fund go directly into our restoration work, and since January 2011 this has meant some £3,000 for our projects. Items financed include all the window glass and weather protection tarpaulins for 70759, the deposit for the teak order and the chroming of 43600's new coat hooks. Many items of supplies and tooling for our work have also been funded by the shop's LNER proceeds, including paint, varnish, a hot air gun, various brass screws and tools, special adhesives and many other small needs. The shop was also able to make a contribution towards the Charitable Trust's purchase of open carriage 52255, thus retaining this vehicle on the SVR as part of Britain's longest restored Gresley Teak Train.

Special thanks also go to those who use the shop as a customer or donate items for sale. This help is invaluable.

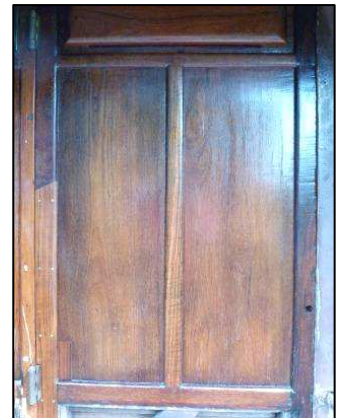
### PIGEON VAN DOOR REPAIR



Remember this 'horror'? Here's what we've done with it. The door is now hung in its rightful place and the repaired



area is receiving its first coats of varnish. Work continues to complete the door's remaining restoration – much of which will only be possible once the ordered new teak arrives.



### NEWSLETTER ARCHIVE

The Trust's website has now made our newsletters available for downloading by website visitors who may be seeking more information on the Trust's LNER projects. See the foot of:

<http://www.svr-rollingstocktrust.org.uk/LNER/index.html>

Supported by the



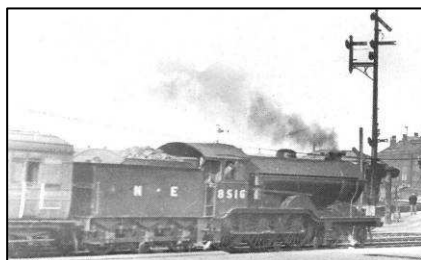
## 70759 WINDOWS AND SHELF BRACKETS

Our pigeon van project now has the four large corridor side windows fitted. This is another milestone and will create a more comfortable winter working environment. We have however lost our former 'air conditioning' – just as the sun began to shine!

And two pigeon basket shelving brackets were trial-fitted for the 'Great British Railway Journeys' filming.



## GRESLEY ROLLING STOCK IN US ARMY SERVICE IN EUROPE 1944



The first picture shows two Gresley full brake vehicles similar to our 70759 in a US Army hospital train 'somewhere in Europe' in June/July 1944. A patient is being loaded for transfer to a hospital in Britain. The vehicles show the Gresley characteristics, and the 'pigeon basket' shelving would have been used to carry

the stretchers. The second picture, taken from Adrian and Neil Turley's book on 'Camp Bewdley' shows an LNER B12/3 loco, which brought the first hospital train to Stourport on 19 July 1944 with patients for the US Army 297 General Hospital at Burlish. The first vehicle is LNER stock.

## RACING PIGEONS BY TRAIN

Pathé News footage of pigeon trains, including Gresley vehicles in 'Pigeon Race Berwick 1938', can be seen at:

<http://www.britishpathe.com/video/pigeon-derby/query/racing+pigeons>

<http://www.britishpathe.com/video/pigeon-race-berwick>

Attached is an interesting PDF file about the social history of pigeon racing including the railways' part in this.

## A4s ON THE MOVE IN NORTH AMERICA

Six A4s together in 2013 begins to look a date not to miss ... See these links:

<http://www.youtube.com/watch?v=PjOnu6Q4sQc>

[http://www.youtube.com/watch?v=yB-TNoTE\\_G0](http://www.youtube.com/watch?v=yB-TNoTE_G0)

## EASYFUNDRAISING

**IMPORTANT** – Gift aid your 'purchase donations'! If you are a taxpayer, go to your Easyfundraising account settings and complete the Gift Aid section. This adds 25% to the benefit of your purchase 'commission'. To do this, click on "Account v" at the extreme right end of the line showing how much you have raised; select "Settings"; and fill in the Gift Aid details requested (first line of your address and post code, ticking the taxpayer and the Gift Aid boxes as appropriate). Save the changes, and its done. The Trust then benefits from the tax refund as well!

A PDF file describing all this at: <http://www.svr-rollingstocktrust.org.uk/PDFs/Easysearch+EasyfundraisingREV-1.pdf>

## LNER Carriage Group

September 2012

## LNER (SVR) Coach Fund

Websites with information about the Teak Train and current developments can be found at:

<http://www.svr-rollingstocktrust.org.uk/index.html>

<http://www.lnersvrcoachfund.org.uk/>

<http://lner.svr-rollingstocktrust.org.uk/>

Either of the second or third addresses takes you to a shared website covering all aspects of the SVR teak train.

Support SVR Rolling Stock Trust Co Ltd (Charity 1092723) for free when shopping online with over 500 popular retailers including Amazon, Next, M&S, John Lewis, Comet and many more that make donations to our Charity when you buy through this site: <http://www.easyfundraising.org.uk/svrrstc>

For similar free benefit to the SVR Rolling Stock Trust Co. Ltd (Ch. No.1092723) use the 'easysearch' search engine earning a halfpenny each time, now regularly producing more than £1 per week

<http://svrrstc.easysearch.org.uk/>

Supported by the

