

LNER BRAKE COMPOSITE 24068



40 YEARS ON THE SVR!
1972 - 2012

<http://www.lnersvrcoachfund.org.uk>



**Severn Valley
Railway**
CHARITABLE TRUST LTD



CARRIAGE GROUP
Does it with track

A Department of
**Severn Valley Railway
Charitable Trust Limited**
Registered Charity No.1092723



Caring for the Trust's Gresley Carriages on the Severn Valley Railway
The Railway Station, Bewdley, Worcs. DY12 1BG
<http://lner.svr-rollingstocktrust.org.uk>

**Caring for Gresley carriages on the Severn Valley Railway
The Railway Station, Bewdley, Worcestershire, DY12 1BG**

Coach Fund President: David Williams **CF Vice Presidents:** Tim Godfrey FCIM, F Inst D, FFB and Mick Haynes
Trustees: Hugh McQuade (Ch), Stewart Clark, Mike Cranmore, Colin Griffiths, Richard & Doris Gunning, Richard Hill, David Massey

LNERCF & LNERCG NEWSLETTER No.33

CHRISTMAS GREETINGS TO ALL OUR FRIENDS & SUPPORTERS



It looks like Santa's making a double visit to Bewdley this year with the rare sight of parallel 'Santa Specials' awaiting the Kidderminster road at Bewdley on 1st December. The trains are in the care of visiting GWR 4-6-0 No.4936 'Kinlet Hall' and SVR-based GWR 2-8-0 No.2857.

PROGRESS WITH 70759'S NEW ROOF

By end-November the canvas was laid on the roof to settle. Application of the canvas bonding mastic and trimming to fit followed early in December. Next will be the destination board brackets, ventilators and rain strips. The final step will be the attractive, if impractical, white water-proofing paint.

Inside, the water tank is now firmly fixed in its permanent position (*right*).



Other inside work includes a start on the wiring and testing of the lighting circuits and ducting many hundreds of feet of cables (*pictures above*). The illuminated bulbs are on test with a battery supply.




LNER S-V-R COACH FUND
www.lner-svr-coachfund.org.uk




LNER CARRIAGE GROUP
Does it with track

A Department of
**Severn Valley Railway
Charitable Trust Limited**
Registered Charity No.1092723

Caring for the Trust's Gresley Carriages on the Severn Valley Railway
The Railway Station, Bewdley, Worcs. DY12 1BG
<http://lner.svr-rollingstocktrust.org.uk>

Pictures below show the ladder brackets in position, along with some of the cable ducting panels and the cargo doors in their rather fetching crimson undercoat.



With the last of the twelve doors getting its teak panels, beading and being readied for varnishing, 70759 begins to feel more like a proper carriage – *provided that you don't look too closely at the many areas still requiring acres of work and a great deal more sponsorship!*

Hopefully the vehicle will be ready to run in service by 2017.

MORE NEWS OF GRESLEY TOURIST THIRD OPENS 43600 & 52255



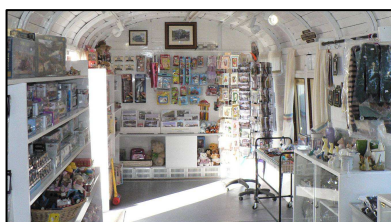
The 'forest' of seat legs is being prepared for a life supporting the new seating in the TTOs. Here they are in the process of being stained and varnished (*left picture*) and some now fixed to the new seat base frames (*right*).

THE QUEEN'S AWARD FOR VOLUNTARY SERVICE

The Queen's Award for Voluntary Service is the highest award given to volunteer groups across the UK. The SVR has received this major award in recognition of the tireless work of the large army of volunteers that has worked so hard throughout our Railway, now for nearly half a century. This has ensured the SVR is the huge success that it is today. The presentation was formally made by the Lord-Lieutenants for Worcestershire and Shropshire. It takes the form of a commemorative piece of crystal and a certificate signed by HM The Queen.

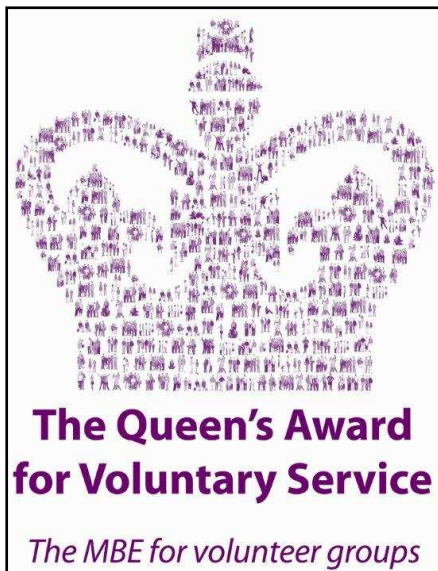
Alan Longdon, Deputy Chairman of the Severn Valley Railway Company, accepted the award on behalf of all volunteers, and a number of volunteer representatives attended the ceremony.

This award is a significant and prestigious recognition of the work of all our volunteers, past and present.



BEWDLEY STATION SHOP

Don't forget to check whether the station shop can meet your Christmas needs! Doris & Sue await your custom.



LNER Carriage Group

December 2013

LNER (SVR) Coach Fund

Websites with information about the Teak Train and current developments can be found at:

<http://www.svrtrust.org.uk> <http://www.lnersvrcoachfund.org.uk/> <http://lner.svr-rollingstocktrust.org.uk/>

Either of the second or third addresses takes you to a shared website covering all aspects of the SVR teak train.

- Support the Severn Valley Railway Charitable Trust (Charity 1092723) for free when shopping online with over 500 popular retailers including Amazon, Next, M&S, John Lewis and many more that make donations to our Charity when you buy through this site:

<http://www.easyfundraising.org.uk/svrct>

- For a similar free benefit to the SVR Charitable Trust use the 'easysearch' search engine earning a halfpenny for each search, now regularly producing more than £1 per week

<http://svrct.easysearch.org.uk/>

