



<http://www.lnersvrcoachfund.org.uk>



<http://svrtrust.org.uk/>



Caring for Gresley carriages on the Severn Valley Railway
The Railway Station, Bewdley, Worcestershire, DY12 1DP

Coach Fund President: David Williams CF Vice Presidents: Tim Godfrey FCIM, F Inst D, FFB and Mick Haynes
Trustees: Hugh McQuade (Ch), Stewart Clark, Mike Cranmore, Colin Griffiths, Richard & Doris Gunning, Richard Hill, David Massey

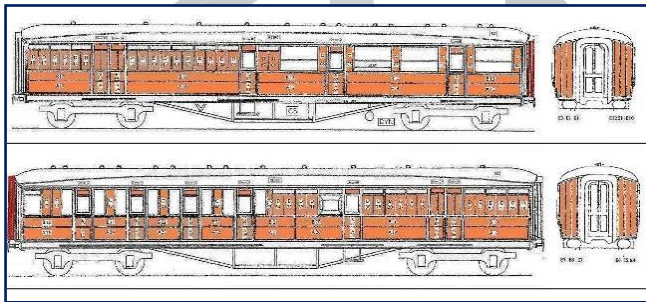
LNERCF & LNERCG NEWSLETTER No.44

RESTORED KITCHEN COMPOSITE No.7960



On 28th May this superb carriage had another outing. It was in one of the rôles intended for it – running in a short formation as a special SVR private dining charter. Here are views of the train passing through Bewdley that Thursday afternoon.

OUR BRAKE THIRD PROJECT



1 - DONATIONS

Here's a sight that your fundraising officer only dared to hope for when this major project was started – a one hundred per cent sponsored set of exterior teak panels. All 109 of them!

Completion of the panel sponsorship is a landmark point in the project. The size of that task was somewhat daunting when we first launched the idea of sponsorship. But thankfully we have some very supportive good friends who put their interest into a tangible form. And for that we are ever grateful!

Nonetheless, the final stages of a major project of this kind are very expensive. And we still have to finance the final mechanical overhaul plus the livery lining-out and varnishing. Many other opportunities also remain for sponsorship:-

- five pigeon shelves (£40 each)
- four luggage racks (Compartments A & D – £150 each)
- three mirrors (£75 each)
- six pictures (£35 each)
- eight picture frames (£50 each)

Please email the editor at gresley@gotads1.co.uk for details of these and other opportunities for your generosity....

Our SVR Trust had a good day at the Worcester Races on 24th June, raising some £35k for the charity's various objectives. And the 'Peep behind the Scenes' event on 18th July added £55 in cash donations from our visitors to the Brake Third. Thank you.

As a footnote, does **your** use of the 'easysearch' facility benefit your charity on this scale? See details on this and 'easyfundraising' at the end of this newsletter. We can supply a PDF explaining how to set these up.

CAUSE STATS

Completed Searches: **22,191**

Amount Raised: **£127.84**

Statistics are updated weekly (why?)
Last updated: 8th July



2-RESTORATION PROGRESS AT KIDDERMINSTER & BEWDLEY



Most pictures on this page cover recent work to advance the LNER cause on the SVR. The first picture shows the bogies for our Brake Third, now substantially advanced at Kidderminster. The centre picture shows a BR Mark I coach

under repair to take a temporary place in the Gresley Teak Set as a cover for forthcoming teak vehicle overhauls.

We have also installed the Guard's writing table, which swivels to allow access to the seat behind – third picture.

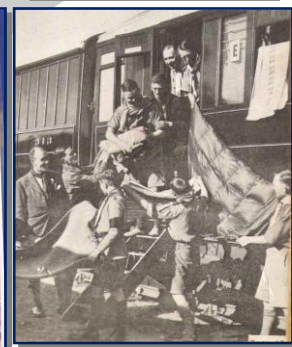
The interior of the carriage is changing rapidly, thanks in particular to some outstanding woodwork done under contracts with Boston Lodge, Festiniog Railway. They earlier made the seat legs for our open carriage restorations in 43600 and 52255 and have now supplied many of the new wood fittings in the Brake Third's compartments. The pictures below illustrate the new window blind covers, window surrounds, beading, pelmets and door framing elements that they have produced to a very high standard. It's good to know who your friends are! We had much to show our visitors on the SVR 'Peep behind the Scenes' day on 18th July, including the now largely finished WC compartment.



The lino has been laid at the passenger end, and the luggage racks are also in progress. Other completed items are the newly-made underseat grills to protect the heater elements from inquisitive young fingers. The WC has gained a mirror – not a genuine LNER item, which would be too tempting to thieves, but it looks the part – and the WC seat has its glorious varnished finish.

LNER HISTORY - SCOUT 'LAND CRUISES'

Between 1935 and 1939 there were six train cruises with 150 Hertfordshire Scouts and Scouters visiting locations in England and Scotland. The pictures show this was another LNER marketing initiative on *Northern Belle* lines. Readers may recognise the LNER moquette is the same pattern used in our recent TTO 43600 interior restoration. The Scouts slept on board, travelling through the night and undertaking various activities with the local groups including climbing Ben Nevis.



LNER Carriage Group

July 2015

LNER (SVR) Coach Fund

Websites with information about the Teak Train and current developments can be found at:

<http://www.svrtrust.org.uk> <http://www.lnersvrcoachfund.org.uk/> <http://lner.svr-rollingstocktrust.org.uk/>

Either of the second or third addresses takes you to a shared website covering all aspects of the SVR teak train.

- Support the Severn Valley Railway Charitable Trust (Charity 1092723) for free when shopping online with over 500 popular retailers including Amazon, Next, M&S, John Lewis and many more that make donations to our Charity when you buy through this site:

<http://www.easyfundraising.org.uk/svrct>

- For a similar free benefit to the SVR Charitable Trust use the 'easysearch' search engine earning a halfpenny for each search, now regularly producing more than £1 per week

<http://svrct.easysearch.org.uk/>